



3DEXPERIENCE® CONFERENCE

SEPTEMBER 14-15
DARMSTADT | GERMANY

Migration from ENOVIA SmarTeam to
3DEXPERIENCE under the usage of the xPDM
adapter at Preh GmbH

Sébastien Chaumiole,
Managing Director
valexon GmbH





**Migration from ENOVIA
SmarTeam to 3DEXPERIENCE
under the usage of the xPDM
adapter at Preh GmbH**

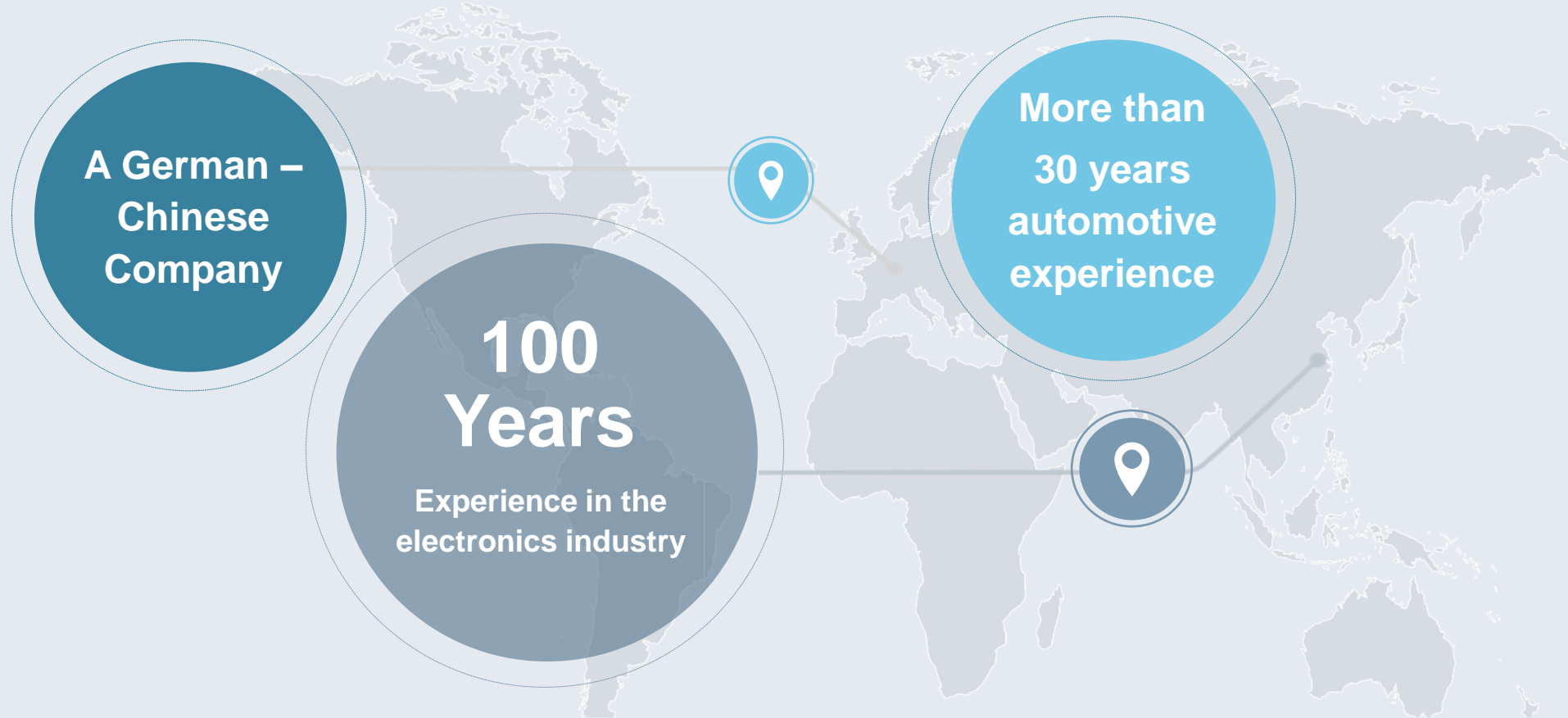
valexcon
value · expertise · consulting

Introduction

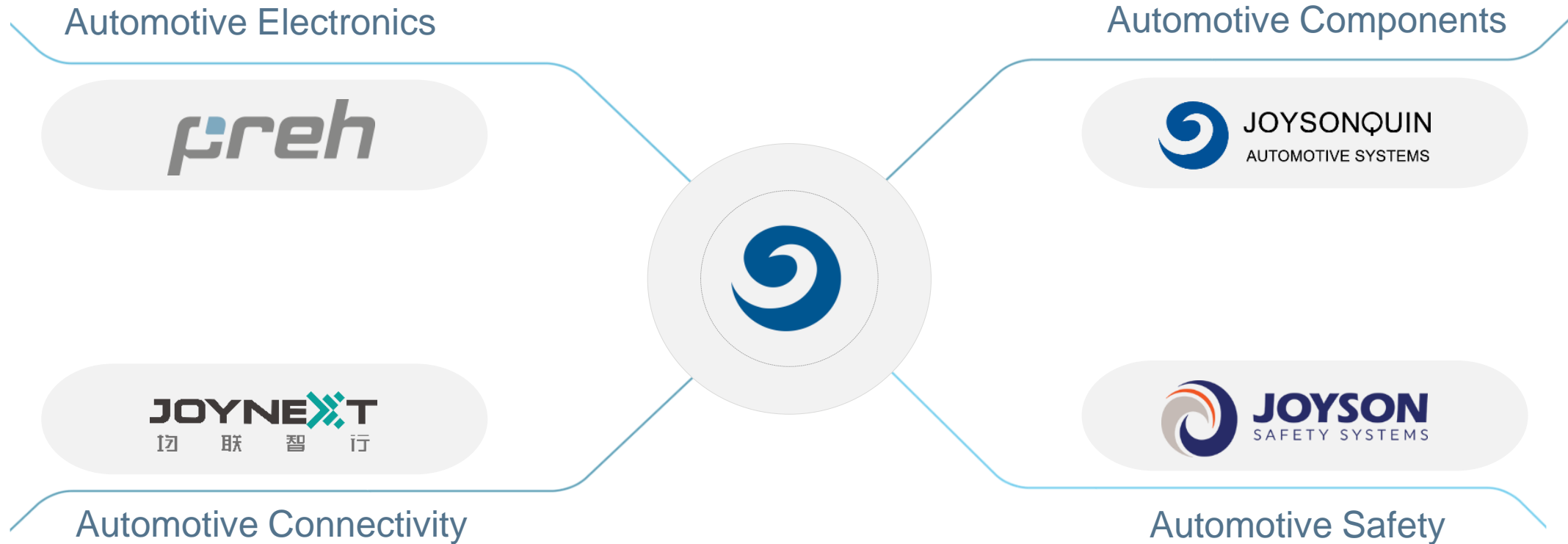
Project Objectives & Requirements

Solution Overview

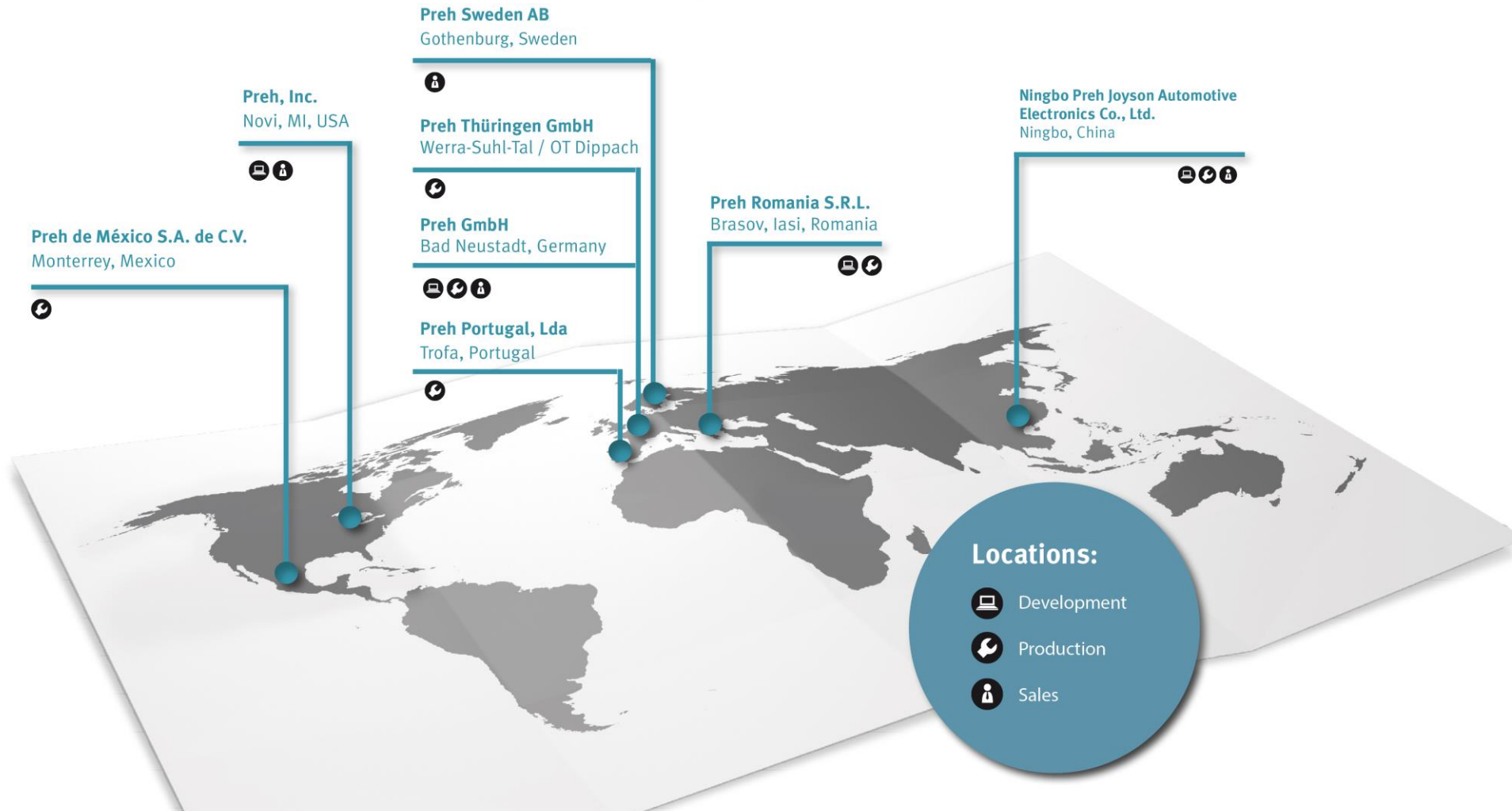
Use Cases



The perfect combination of access to growth markets,
high-tech know-how and cost efficiency

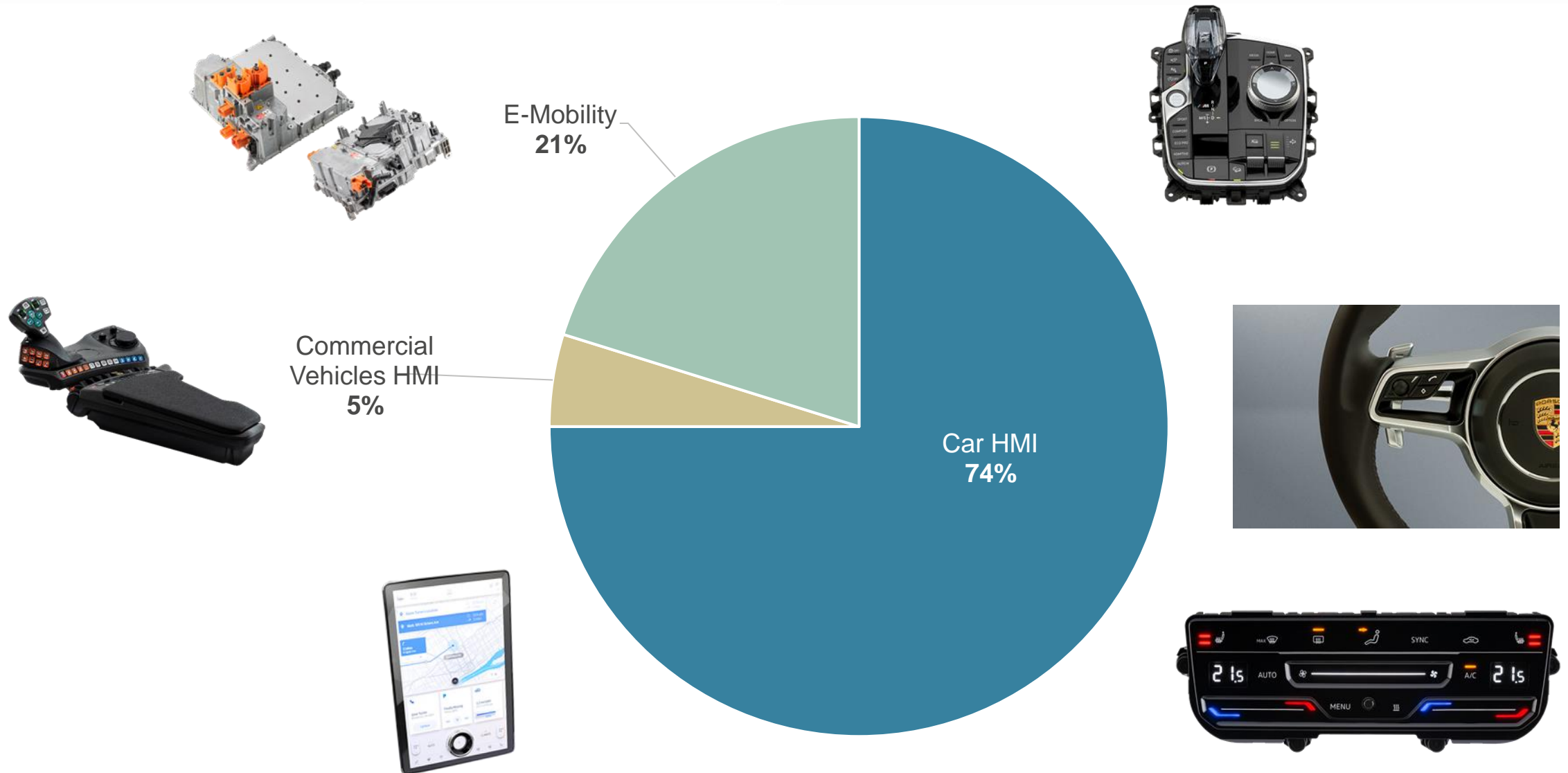


Joyson Electronics Group is one of the largest automotive suppliers globally:
>100 locations in 30 countries; more than 50,000 employees; turnover about € 6 Bn (2021)



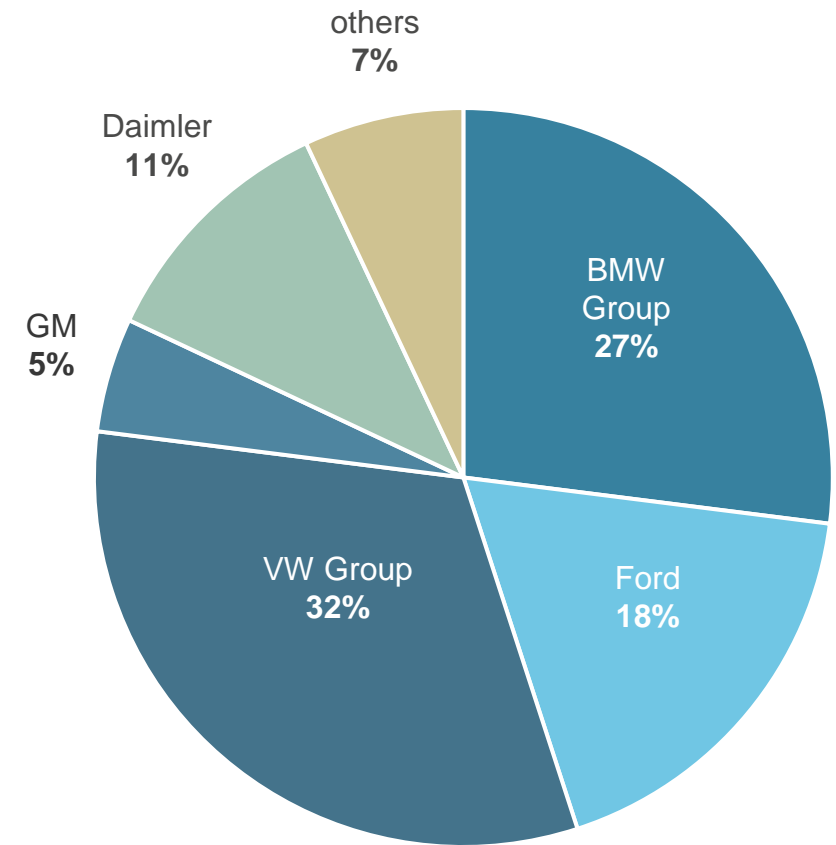
3 Sales Regions / 6 Production Plants / 4 R&D Centers


SALES BREAKDOWN BY PRODUCT DIVISION





HMI = Human Machine Interface


PREH GROUP CUSTOMERS



-  valexcon GmbH, established in April 2021, founded by a group of former IBM Deutschland GmbH employees, is focussing on the delivery of Dassault Systèmes related PLM Services

-  valexcon GmbH is a Dassault Systèmes CSI Partner

-  valexcon GmbH proposes a whole set of services and solutions for the PLM market
 - Program- and Project Management
 - Advisory and Implementation Consulting
 - Customization and Development of Software Modules
 - Technical Support and Maintenance Services
 - Data Migration Services

-  valexcon GmbH is a highly skilled team that have made key contributions to over 100+ PLM projects worldwide

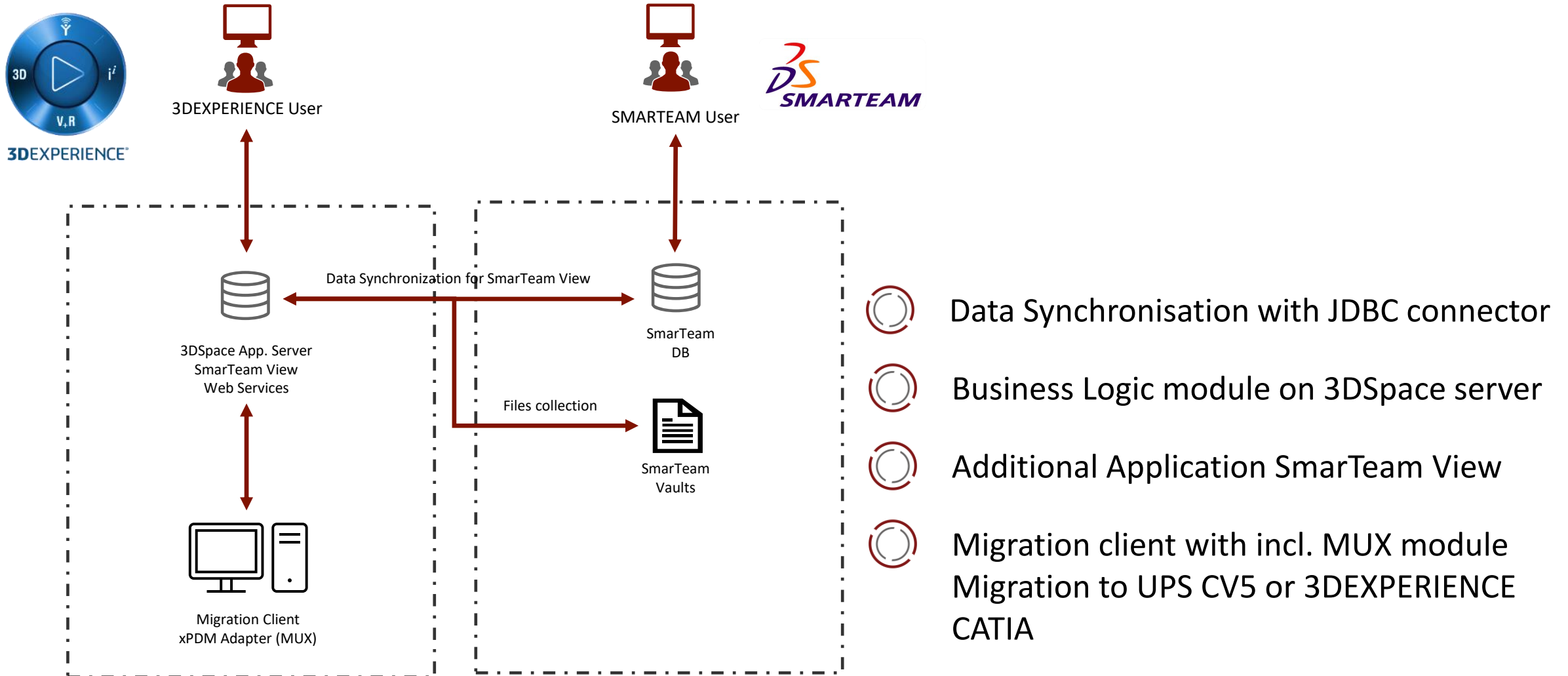
Project Objectives & Requirements

- Transition from ENOVIA SmarTeam Multisite Environment (6 sites) to 3DEXPERIENCE
- Migration of all the mechanical design department's data from SmarTeam – CATIA V5 to 3DEXPERIENCE – CATIA V5 including non-CAD documents
- Big bang migration not possible due to large amount and complexity of data
- Co-Existence of both application with share of ownership needed
- Migration need to meet R&D Timeline
- Migration of full version history needed
- Project based migration

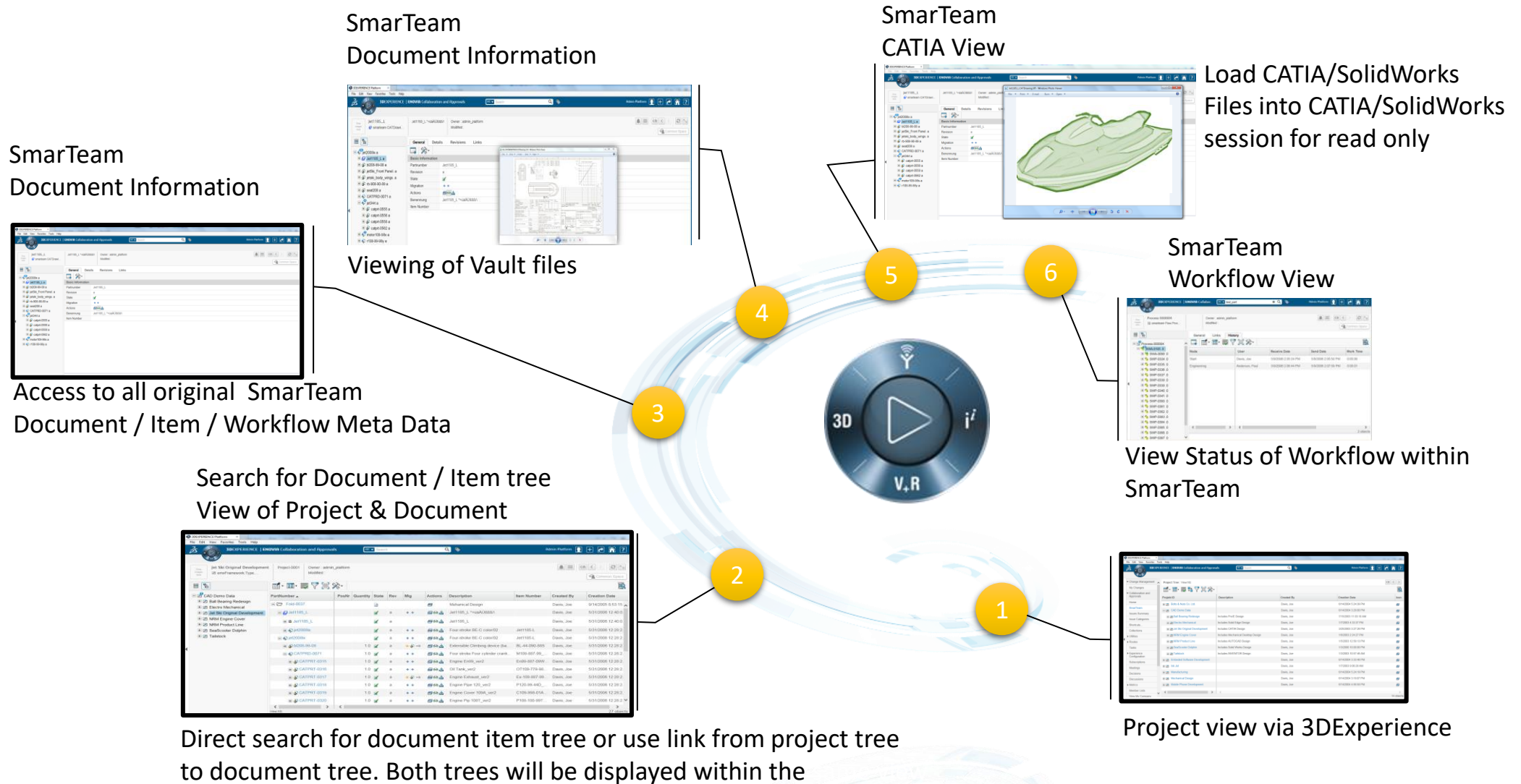
Project Roadmap

- 🕒 June 2021 – Project Kick-Off
- 🕒 September 2021 – First pilot implementation of the 3DX SmarTeam View ready
- 🕒 January 2022 – First Migration Use Cases ready for testing
- 🕒 May 2022 – First project migration and productive Go-Live with ca. 40 users
- 🕒 July 2022 – Next project migration – ca. 60 users productive in 3DEXPERIENCE
- 🕒 Q4 2022 – Full production Go-Live

On Demand Migration Suite - Solution overview



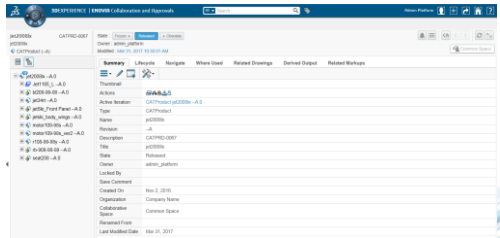
Use Case No. 1: SmarTeam View via 3DEXPERIENCE



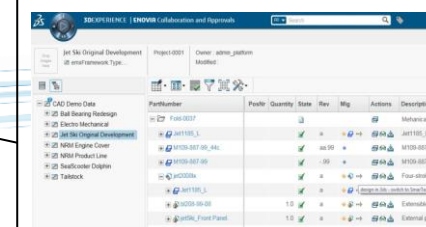
Use Case No. 2: Data Migration

New 3DEXPERIENCE Structure

As result of the migration a new structure within 3DEXPERIENCE is available

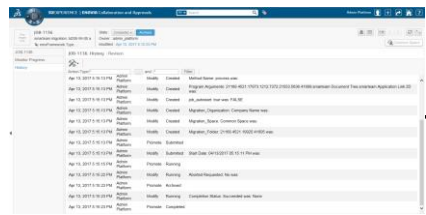


Ownership moved from SmarTeam to 3DEXPERIENCE

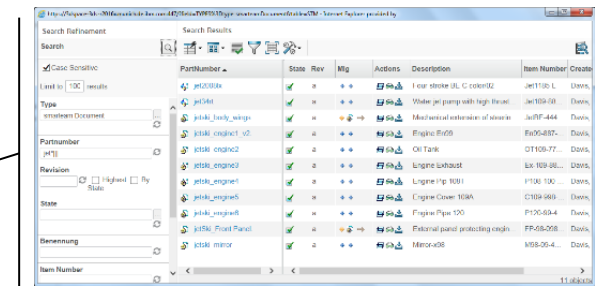


Migration finished. User can work within 3DEXPERIENCE

Migration History Define and manage equipment software configuration

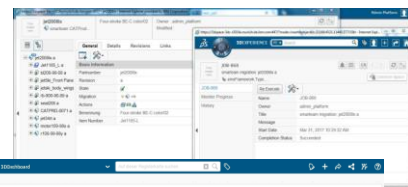


Migration Documents from SmarTeam inside 3DEXPERIENCE

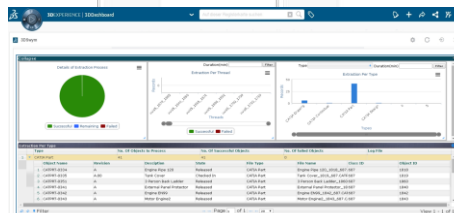


Search Item / Document tree for migration

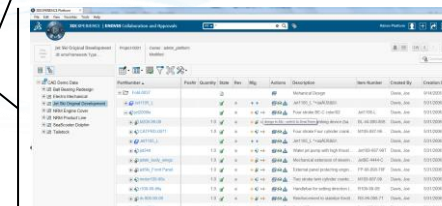
Job Control Migration is running as background job in 3DEXPERIENCE



Monitoring Migrated Parts, Assemblies in 3DEXPERIENCE



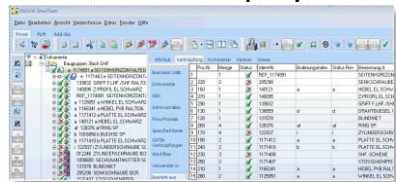
Flag the top level to be migrated and all objects underneath are flagged for migration



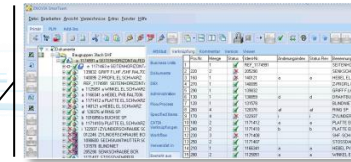
Use Case No. 3: Co-Existence SmarTeam & 3DEXPERIENCE

No big bang data migration.
SmarTeam user who are not migrated will still use SmarTeam

SmarTeam will be faced out step by



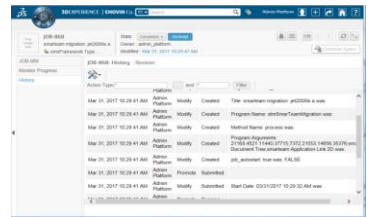
SmarTeam could be used for small changes if needed



If SmarTeam Licenses are available access is still possible – parallel scenario

Ownership & Moving History

All transactions are stored within 3DEXperience job control history



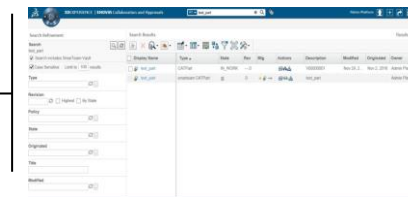
Move Ownership Up & Down

Ownership could be moved between SmarTeam & 3DEXperience whenever needed



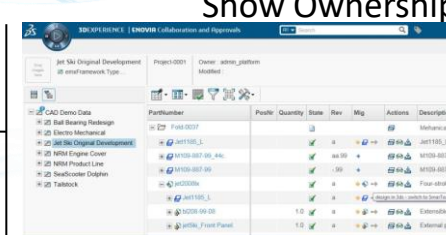
Combined Search Result





By using a special search the user will get a result of SmarTeam & 3DEXperience objects in one view



Show Ownership

Check if ownership is located in SmarTeam or 3DEXperience



-  Widget Based SmarTeam View (3DDashboard)
-  SmarTeam Item Structure migration
-  3DEXPERIENCE On Cloud Support
-  SOLIDWORKS Support



CONTACT PERSON

Sébastien Chaumiole

Managing Director

sebastien.chaumiole@valexcon.de

Thank You.

valexcon
value · expertise · consulting